



Lightweight Ultra Flexible Solar Module

P_{max}:100W/200W

TOPCON Solar Cell

25.1%

Efficiency Up To

FEATURES

Light Weight and Thinness

3.1kg and 3mm thickness, match various low-bearing capacity projects.

Ultra Flexible

High quality and efficiency TOPCON N type solar cells encapsulated by advanced organic polymer encapsulation materials;
Super Flexible up to 360°;
Fit all kinds of curved surface perfectly.

BI-FACIAL Technology

Double-sided power generation efficiency and gain.

Customizable

Customized designs for different applications.

Convenient Installation

Easy installation and convenient transportation with lower cost.



10 year

Quality warranty

25 year

Performance warranty

- 1st year degradation less than 2.5%, 25 years power output 82.36% guaranteed.

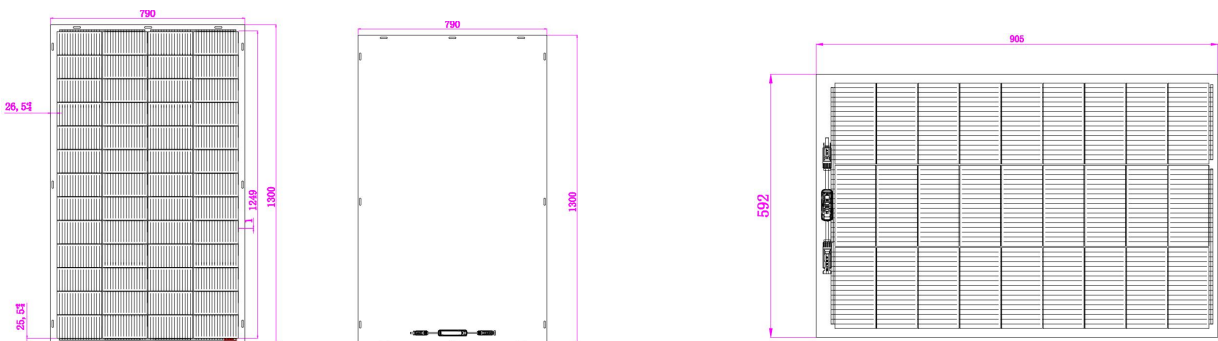
COMPREHENSIVE QUALIFICATIONS & CERTIFICATIONS

- ★ ISO 9001: 2015 Quality Management
- ★ ISO14001: 2015 Environment

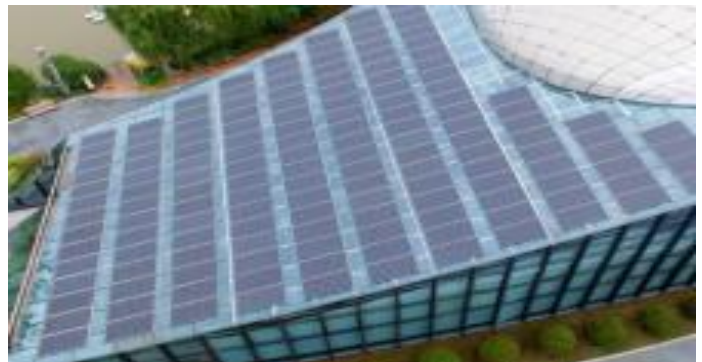
SPECIFICATION

Model	ESM-200 UF	ESM-205 UF	ESM-100 UF	ESM-105 UF
Pmax	200	205	100	105
Voc	37.25	37.58	19.10	19.33
Isc	6.64	6.68	6.48	6.68
Vmpp	32.77	33.39	16.45	16.84
Imp	6.11	6.14	6.08	6.24
Weight	3.1kg±3%		1.6kg±3%	
Product size	1300*790*3mm		905*592*3mm	
Cell Size	182*94mm		182*91.875mm	
Solar Cell QTY	52pcs(4*13)		27pcs(9*3)	
Cable	700mm(can be customized)		500mm(can be customized)	
Wooden box packaging	64pcs/box		64pcs/box	
Dimension	1480*1130*980mm		1070*1120*785mm	
QYT in 20HQ	896pcs(14*64pcs)			
QTY in 40HQ	2048pcs(32*64pcs)		4224pcs(66*64pcs)	

DIMENSION



APPLICATION



EINNOVA SOLARLINE ENERGY CORP. LIMITED 210000 Nanjing PEOPLE'S REPUBLIC OF CHINA

TEL: +86-25-8479-2033 Cell: +86-138-13088384

EMAIL : emma.wu@einnova-solarline.com

Website: www.einnova-solarline.com





Light Weight Semi-Flexible Solar Module 100W/200W

TOPCON Solar Cell

25.1%

Efficiency Up To

FEATURES

LightWeight and Thinness

3.1kg and 3mm thickness, match various low-bearing capacity projects.

Flexible

Ultra-thin silicon wafers with advanced organic polymer encapsulation materials;
Bending radius could reach 37°;
Fit various kinds of curved surface perfectly.

BI-FACIAL Technology

Double-sided power generation efficiency and gain.

Customizable

Customized design for different applications.

Convenient Installation

Easy installation and convenient transportation with lower cost.



10 year

Quality warranty

25 year

Performance warranty

- 1st year degradation less than 2.5%, 25 years power output 82.36% guaranteed.

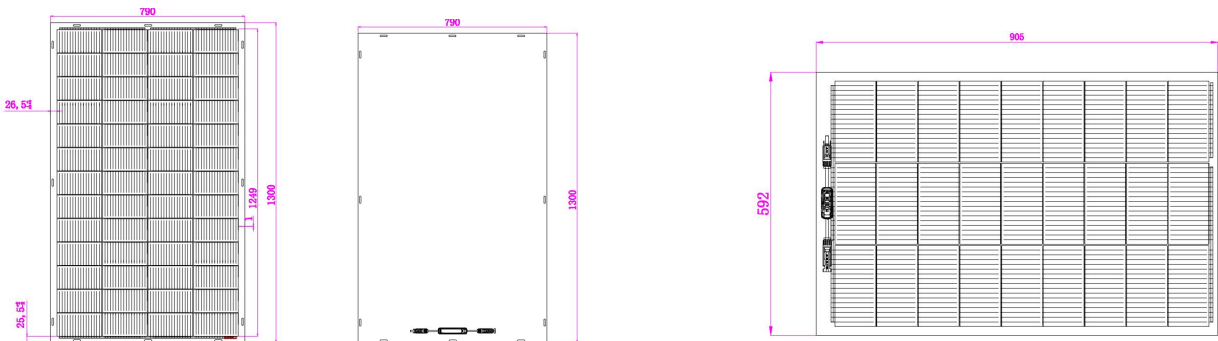
COMPREHENSIVE QUALIFICATIONS & CERTIFICATIONS

- ★ ISO 9001: 2015 Quality Management
- ★ ISO14001: 2015 Environment

SPECIFICATION

Model	ESM-200 SF	ESM-205 SF	ESM-100 SF	ESM-105 SF
Pmax	200	205	100	105
Voc	37.25±3%	37.58±3%	19.10±3%	19.33±3%
Isc	6.64±3%	6.68±3%	6.48±3%	6.68±3%
Vmpp	32.77	33.39	16.45	16.84
Imp	6.11	6.14	6.08	6.24
Weight	3.1kg±3%		1.6kg±3%	
product size	1300*790*3mm		905*592*3mm	
Cell Size	182*94mm		182*91.875mm	
solar cells	52pcs(4*13)		27pcs(9*3)	
Cable	700mm(can be customized)		500mm(can be customized)	
Wooden box packaging	64pcs/container		64pcs/container	
Dimension	1480*1130*980mm		1070*1120*785mm	
20HQ	896pcs(14container*64pcs/container)			
40HQ	2048pcs(32container*64pcs/container)		4224pcs(66container*64pcs/container)	

DIMENSION



APPLICATION



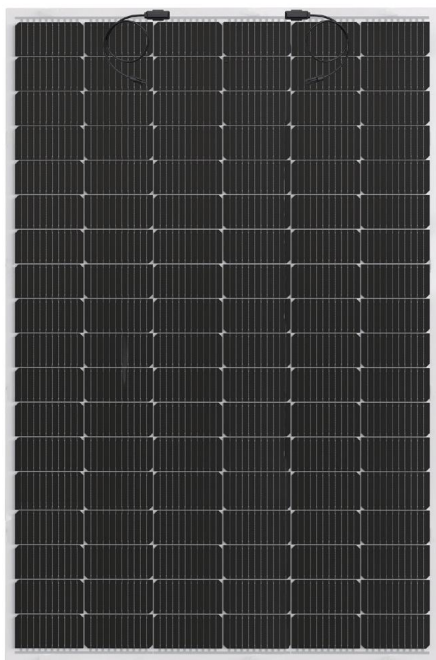
EINNOVA SOLARLINE ENERGY CORP. LIMITED 210000 Nanjing PEOPLE'S REPUBLIC OF CHINA

TEL: +86-25-8479-2033 Cell: +86-138-13088384

EMAIL : emma.wu@einnova-solarline.com

Website: www.einnova-solarline.com





Light Weight Solar Module 100W/200W

TOPCON Solar Cell
25.1%
Efficiency Up To

FEATURES

Light Weight and Thinness

3.1kg and 3mm thickness.

Suitable for various low-bearing capacity roofs and buildings.

BI-FACIAL Technology

Double-sided power generation efficiency and gain.

Customizable

Customized design for different applications.

Convenient Installation

Easy installation and convenient transportation with lower cost.

Ultra-thin silicon wafers with advanced organic polymer encapsulation materials.



10 year

Quality warranty

25 year

Performance warranty

- 1st year degradation less than 2.5%, 25 years power output 82.36% guaranteed.

COMPREHENSIVE QUALIFICATIONS & CERTIFICATIONS

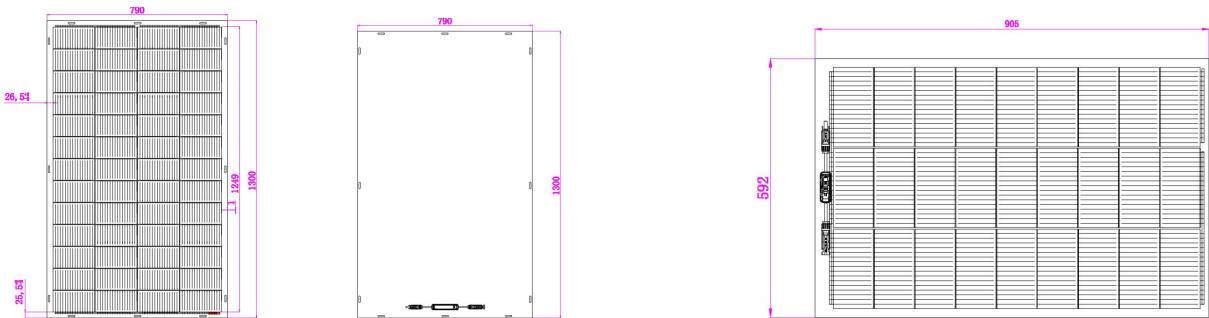
★ ISO 9001: 2015 Quality Management
ISO14001: 2015 Environment



SPECIFICATION

Model	ESM-200 LW	ESM-205 LW	ESM-100 LW	ESM-105 LW
Pmax	200	205	100	105
Voc	37.25±3%	37.58±3%	19.10±3%	19.33±3%
Isc	6.64±3%	6.68±3%	6.48±3%	6.68±3%
Vmpp	32.77	33.39	16.45	16.84
Imp	6.11	6.14	6.08	6.24
Weight	3.1kg±3%		1.6kg±3%	
product size	1300*790*3mm		905*592*3mm	
Cell Size	182*94mm		182*91.875mm	
solar cells	52pcs(4*13)		27pcs(9*3)	
Cable	700mm(can be customized)		500mm(can be customized)	
Wooden box packaging	64pcs/container		64pcs/container	
Dimension	1480*1130*980mm		1070*1120*785mm	
20HQ	896pcs(14container*64pcs/container)			
40HQ	2048pcs(32container*64pcs/container)		4224pcs(66container*64pcs/container)	

DIMENSION



APPLICATION

